

QYO audition excerpts for Big Band membership in 2024

Excerpts: Alto Sax 1, Tenor Sax 1, Baritone Sax

Trumpet 1 (high), Trumpet 4 (low)

Trombone 1 (high), Trombone 4 (low)

Piano, Vibraphone & Drums

Vocals, Guitar & Bass have different pieces

Big Band applicants should prepare the following for audition:

- Set piece ***Cheers*** by Mancini (attached)
- Play piece unaccompanied

- ***Blues Walk*** head x 2 and solo x 2 (attached)
- MP3 available for your practice
- Choose your part (Eb, Bb, treble or bass)
- Drums may play with or without backing
- At the audition the same MP3 backing will be provided
- Play in the key provided on the backing track
- Vocals have different piece

Please email louise@qyo.org.au if you have any questions.

NOTICE: The law provides penalties for any unauthorized copying or reproduction of any copyrighted musical work.

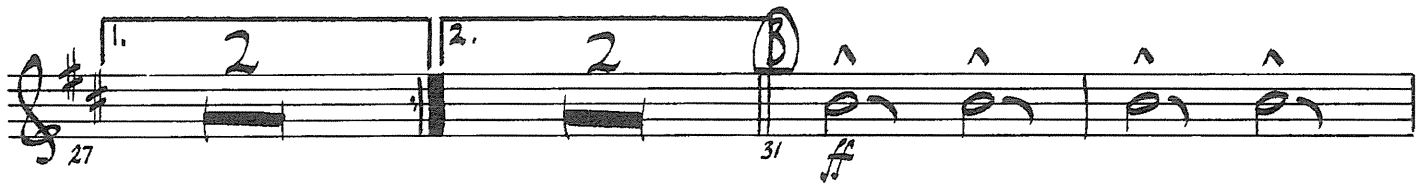
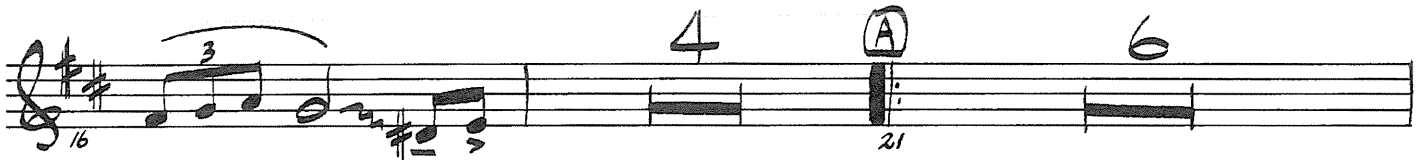
CHEERS!

4th B^b TRUMPET

Composed & Arranged by HENRY MANCINI.

Scored by JOE REISMAN.

FAST SWING $\text{♩} = 192$



4th B^b TRUMPET
CHEERS!

41

45

55

65

75

81

91

95

99

103

4th B^b TRUMPET
CHEERS!

105 **G** *f*

109

113

116 *f*

120 **H** **B** **I** **3** 129

132 *f* *ff* ST. *♩* SWING *♩*

136 *ff*

139 *ff*

The Blues Walk

•E♭•



By Sonny Stitt

PLAY 14 CHORUSES (♩ = 204)

INTRO

D7+9 D7+9 G7

Melody

G7 G7

C7 G7

D7+9 G7

SOLOS

G7 C7 G7 C7

G7 B- E7 A- D7 (B- E7)
G7 E7 A- D7

ending chord

G7b9

The Blues Walk

• B♭ •



By Sonny Stitt

PLAY 14 CHORUSES (♩ = 204)

INTRO

Musical notation for the Intro in 4/4 time. The first staff shows a melodic line with chords G7+9, G7+9, and C7. Below the staff, it says "(Clifford played Intro & melody 8VA)".

Melody

Musical notation for the first line of the melody, starting with a C7 chord.

Musical notation for the second line of the melody, featuring F7 and C7 chords.

Musical notation for the third line of the melody, featuring G7+9 and C7 chords.

SOLOS

Chord progression for the solo section: C7, F7, C7, F7.

Chord progression for the solo section: C7, E-, A7, D-, G7, (E- A7), C7, A7, D-, G7.

C7b9 ending chord

Diagram of the C7b9 ending chord on a guitar fretboard.

Copyright © 1972 Forshaw Music
All Rights Reserved International Copyright Secured Used By Permission

The Blues Walk

• TREBLE •



By Sonny Stitt

PLAY 14 CHORUSES (♩ = 204)

INTRO F7+9 F7+9 Bb7

Melody Bb7 Bb7

Eb7 Bb7

F7+9 Bb7

SOLOS

Bb7 Eb7 Bb7 Eb7

Bb7 D- G7 C- F7 (D- G7) Bb7 G7 C- F7

Bb7b9 ending chord

Copyright © 1972 Forshaw Music
 All Rights Reserved International Copyright Secured Used By Permission

THE BLUES WALK

• BASS •



PLAY 14 CHORUSES (♩ = 204)

By Sonny Stitt

INTRO

INTRO

F7+9 F7+9 Bb7

Melody

Melody

Bb7 A Bb7

Eb7 Bb7

F7+9 Bb7

SOLOS

Bb7 Eb7 Bb7 Eb7

Bb7 D- G7 C- F7 (D- G7) (Bb7 G7) C- F7

Bb7b9 ending chord

Copyright©1972 Forshay Music
 All Rights Reserved International Copyright Secured Used By Permission

